

PRODUCT
CATALOGUE



PRABA PLY

BUILD . CONNECT . BELONG

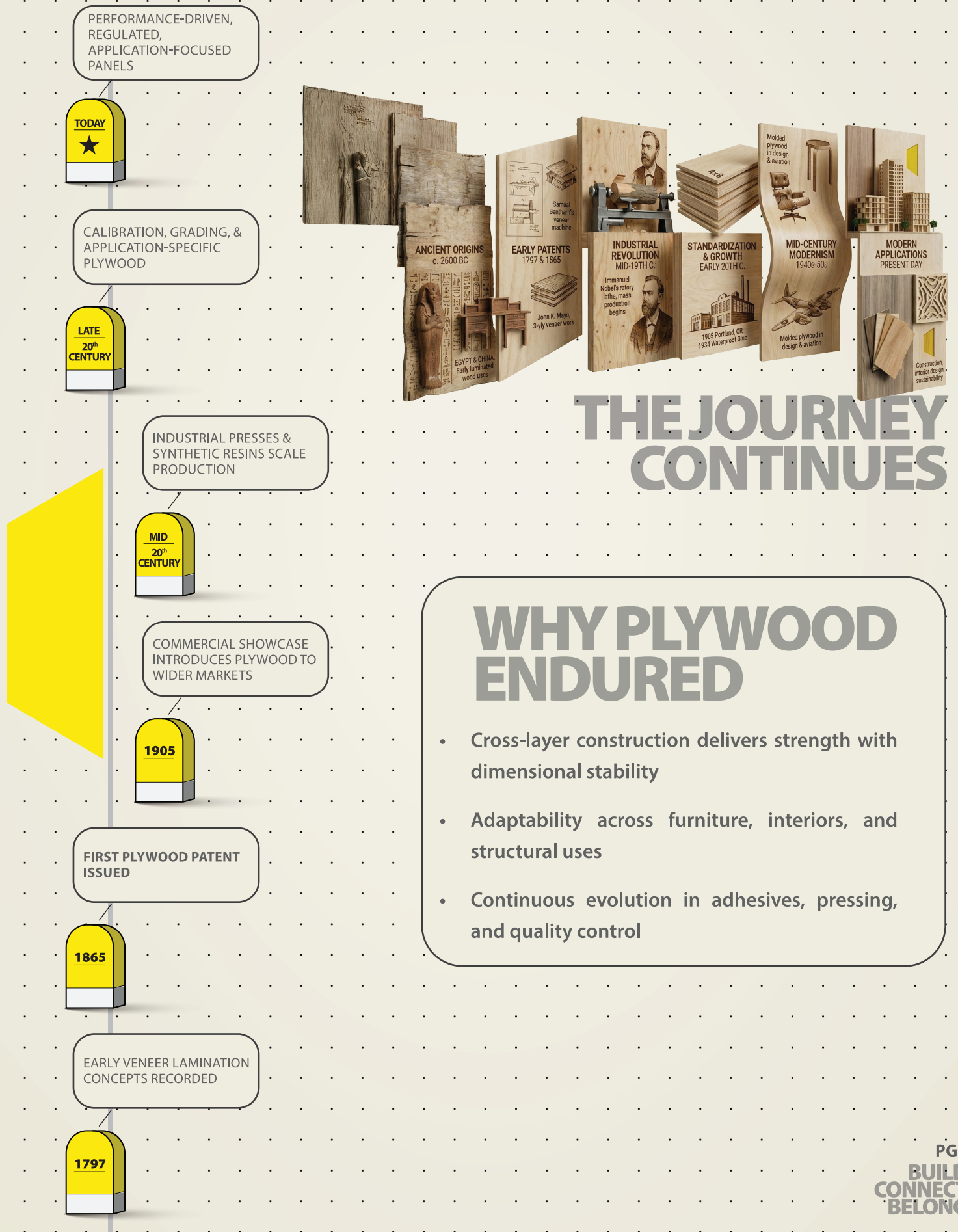


AB HAR GHAR BOLE TOUCH WOOD

prabalply.com

PLYWOOD IN PERSPECTIVE

A material shaped by insight, innovation, and time.



WHY PLYWOOD ENDURED

- Cross-layer construction delivers strength with dimensional stability
- Adaptability across furniture, interiors, and structural uses
- Continuous evolution in adhesives, pressing, and quality control

LOOKING AHEAD

Competition, innovation, and the road forward

THE FUTURE OF PANEL MATERIALS

CHALLENGES AHEAD. OPPORTUNITIES WITHIN



THE COMPETITIVE LANDSCAPE

- OSB / engineered strand boards
- MDF & particle boards
- Cement boards & fibre cement
- WPC & polymer composites
- Metal / aluminum composite panels

Each brings its own advantages and trade-offs.

MARKET SHARE OF PANEL & SHEET MATERIALS

PAN India (Sales Volume)

Plywood	78.40%
Particle board	10.70%
MDF/HDF	8.60%
Cement board (thickness assumed)	1.24%
ACP (thickness assumed)	1.11%
OSB	0.02%

N/A (volume not disclosed in public sources)

THREATS

- Price-driven substitution
- Emission and compliance scrutiny
- Misuse of “engineered” as a blanket promise

OPPORTUNITIES

- Cleaner, controlled resin systems
- Better calibration and consistency
- Performance-led product segmentation
- Responsible sourcing and transparency

WHAT KEEPS PLYWOOD RELEVANT

Consistency in core quality. Discipline in bonding. Clarity in application.

Plywood moves forward not by chasing substitutes. But by refining what it does best, responsibly and honestly.

This belief shapes how Prabal Ply builds.

WHO WE ARE



Prabal Ply is built on the belief that strength is not just measured in layers, but in intent, integrity, and craftsmanship. With over two decades of experience across multiple sectors and segments of the plywood industry, our journey is rooted in deep market understanding, hands-on insight, and earned trust.

This experience is anchored by **Ram Raj Plywood Private Limited**, the parent company behind Prabal Ply. Conceptualised in 2022, Ram Raj Plywood represents the coming together of industry professionals with more than three decades of collective exposure to the Indian plywood market. Rooted in Eastern India, the company was established with a clear focus on process discipline, material selection, and long-term manufacturing consistency.

While Prabal Ply's manufacturing chapter may be new, the wisdom guiding it comes from years spent knowing this industry from the inside out. Every board balances engineering precision with time-honoured woodworking values designed to perform, built to last, and trusted across applications. From Gurjan-enriched cores and calibrated construction to in-house resin systems and stringent quality checks, Prabal Ply brings consistency where it matters most.

For dealers and distributors, Prabal Ply stands as a dependable, value-driven partner. For carpenters, architects, and homeowners, it is a material that works as hard as they do.

Because at Prabal Ply, we don't just manufacture plywood. We help you **Build . Connect . Belong**.



PG3
BUILD
CONNECT
BELONG

OUR PRODUCT PORTFOLIO

PRABAL PLY

IS 710 BWP

PRABAL INDIE

PLYWOOD

₹₹

PRABAL LUXORA

PLYWOOD

₹₹₹

IS 1659 BWP

PRABAL INDIE

BLOCKBOARD

₹₹

PRABAL LUXORA

BLOCKBOARD

₹₹₹

IS 5509

PRABAL FIERO

FIRE RETARDANT PLY

₹₹

IS 10701

PRABAL STRUCTURA

STRUCTURAL GRADE PLY

₹₹

IS 2202-1 BWP

PRABAL H.D.+

FLUSH DOORS

₹₹

IS 4990

PRABAL SCALAR

SHUTTERING PLY

₹

FLEXIBLE PLWOOD

PRABAL BENDER

FLEXIBLE PLY

₹₹



₹

ECONOMY

₹₹

PREMIUM
ECONOMY

₹₹₹

PREMIUM

PG4
BUILD
CONNECT
BELONG



IS 710 BWP

PRABAL INDIE

PLYWOOD

Parameter	Industry Standard	INDIE
Length	0 to +6 mm tolerance	2443 mm max
Width	0 to +3 mm tolerance	1221 mm max
Thickness (19mm)	±5%	±2% (High Precision)
Squareness	≤ 2 mm/1000 mm	1 mm/1000 mm
Edge Straightness	≤ 2 mm/1000 mm	2 mm/1000 mm



THICKNESS

4mm | 6mm | 9mm | 12mm
16mm | 19mm | 25mm



SIZE

8'×4' | 8'×3' | 7'×4'
7'×3' | 6'×4' | 6'×3'



E1 CERTIFIED

ECOBREATHE LEVEL 1



AquaFend Tech™ – Repels moisture, resists warping, and stays strong.

नमी को दूर रखे, मुड़ने से बचे, और मजबूती से टिके रहे।



BlazeBlock™ – Engineered to stand strong, even in the heat of crisis.

आग की परीक्षा में भी न डगमगाए, ऐसा निर्माण।



XTerm Plus Tech™ – Smart defense against termite and borer attacks.

दीमक-बोरर को दे मात, स्मार्ट डिफेंस के साथ।



Germoshield Plus™ – Anti-microbial defense for hygienic living.

स्वच्छता में कोई समझौता नहीं एंटी-माइक्रोबियल सुरक्षा हर बार।



TrueGauge Duo™ – Both-side calibrated for consistent thickness and cleaner finishing.

दोनों तरफ कैलिब्रेटेड-एकसमान मोटाई और बेहतर फिनिशिंग के लिए।



Power LayerLock™ – Advanced adhesion that keeps every layer bound tight.

उन्नत एडहेज़न जो हर परत को मजबूती से बांधे रखे।



PressEdge Pro™ – 4-times pressed for a tighter build and improved core integrity

4 बार प्रेस-सघन बनावट और बेहतर कोर के स्थिरता के लिए।



CoreTitan Density™ – Unmatched compactness from a Gurjan enriched core, built for unbeatable strength

गुर्जन-समृद्ध कोर से प्राप्त अद्वितीय सघनता, अतुलनीय मजबूती के लिए निर्मित।

31
STEP
MANUFACTURING
PROCESS

2
STAGE
QUALITY CHECK

30
YEARS
WARRANTY

SUPER FEATURE



Seamless Core™ – Every sheet is built using full-length core layers that are precisely composed and tightly stitched, ensuring perfectly aligned cores, zero gaps, no overlaps, and uncompromised structural strength.

प्रत्येक शीट में पूरी लंबाई वाले कोर लेयर्स का उपयोग किया जाता है जिन्हें सटीक रूप से जोड़ा और स्टिच किया जाता है। इससे कोर पूरी तरह से अलाइन रहता है, कोई गैप नहीं, कोई ओवरलैप नहीं और मजबूती में कोई कमी नहीं।

PRABAL INDIE

PLYWOOD

Strength is built with intent... layer by layer, choice by choice. **Prabal Indie** is our Economy Premium **IS 710 BWP** plywood, crafted for everyday Indian interiors that demand dependable performance.

With a calibrated build, a gap-free core, and strong bonding, **Indie** is designed to stay stable through moisture, heat, and daily use, so furniture holds its shape, kitchens stay reliable, and projects feel secure from start to finish.

Indie is not just "good enough." It is built to be trusted.

Prabal Indie - when you want more than plywood, when you want peace of mind built in.

MID-LEVEL ECONOMY

**KNOW
YOUR
INDIE**

Range & SKU	Calibration	Emission	Key Features
PRABAL INDIE PLYWOOD	TrueGauge Duo	ECOBREATHE Level 1	PressEdge Pro BlazeBlock Tech Power LayerLock AquaFend Tech



PREMIUM-ECONOMY INTERIORS



BUDGET HOTELS



HOSTELS



RETAIL FIXTURES



RESIDENTIAL CARPENTRY



BASIC COMMERCIAL FIT-OUTS

UPGRADE QUOTIENT

Upgrade from regular ply to **INDIE** to reduce sanding and lamination defects by up to 20%, lowering finishing costs across projects.

IS 710 BWP

PRABAL LUXORA

PLYWOOD

Parameter	Industry Standard	LUXORA
Length	0 to +6 mm tolerance	2443 mm max
Width	0 to +3 mm tolerance	1221 mm max
Thickness (19mm)	±5%	±2% (High Precision)
Squareness	≤ 2 mm/1000 mm	1 mm/1000 mm
Edge Straightness	≤ 2 mm/1000 mm	2 mm/1000 mm



THICKNESS

4mm | 6mm | 9mm | 12mm
16mm | 19mm | 25mm



SIZE

8'x4' | 8'x3' | 7'x4'
7'x3' | 6'x4' | 6'x3'



E0 COMPLIANT



AquaFend Tech™ – 100% Boiling Water Proof—built to stay stable in demanding wet zones.

100% बॉयलिंग वॉटर प्रूफ, कठिन गीली परिस्थितियों में भी स्थिरता के लिए।



BlazeBlock™ – Engineered to stand strong, even in the heat of crisis.

आग की परीक्षा में भी न डगमगाए, ऐसा निर्माण।



XTerm Plus Tech™ – Smart defense against termite and borer attacks.

दीमक-बोरर को दे मात, स्मार्ट डिफेंस के साथ।



LuxEdge Finish™ – Polished to perfection, smooth to the last detail.

अंतिम छोर तक स्मूद, फिनिशिंग में कोई समझौता नहीं।



TrueGauge Duo™ – Both-side calibrated for consistent thickness and cleaner finishing.

दोनों तरफ कैलिब्रेटेड—एकसमान मोटाई और बेहतर फिनिशिंग के लिए।



Power LayerLock™ – Advanced adhesion that keeps every layer bound tight.

उन्नत एडहेज़न जो हर परत को मज़बूती से बाँधे रखे।



PressEdge Pro™ – 4-times pressed for a tighter build and improved core integrity

4 बार प्रेसड—सघन बनावट और बेहतर कोर के स्थिरता के लिए।



CoreTitan Density™ – Gurjan-rich core for higher compactness and stronger strength.

गुरजन-रिच कोर—अधिक सघनता और बेहतर मजबूती के लिए।

100%

BOILING
WATER
PROOF

2

STAGE
QUALITY CHECK

LIFETIME

WARRANTY

SUPER
FEATURE



Seamless Core™ – Every sheet is built using full-length core layers that are precisely composed and tightly stitched, ensuring perfectly aligned cores, zero gaps, no overlaps, and uncompromised structural strength.

प्रत्येक शीट में पूरी लंबाई वाले कोर लेयर्स का उपयोग किया जाता है जिन्हें सटीक रूप से जोड़ा और स्टिच किया जाता है। इससे कोर पूरी तरह से अलाइन रहता है, कोई गैप नहीं, कोई ओवरलैप नहीं और मजबूती में कोई कमी नहीं।

PRABAL LUXORA

PLYWOOD

Built for premium spaces, **Prabal Luxora** is our Premium **IS 710 BWP** plywood, crafted for interiors where finish, stability, and long-term confidence matter most.

With a Gurjan-rich core, and stronger bonding performance, Luxora delivers cleaner consistency for high-value carpentry, helping surfaces finish smoother, edges stay truer, and installations hold their form even in demanding moisture zones.

Luxora isn't just a step up. It is a higher standard meant for architects and homeowners who refuse to compromise.

Prabal Luxora - when the space is premium, the plywood should be too.

MID-LEVEL PREMIUM

**KNOW
YOUR
LUX**

Range & SKU	Calibration	Emission	Key Features
PRABAL LUXORA PLYWOOD	TrueGauge Duo	ECOBREATHE Level 0	BlazeBlock Tech AquaFend Tech Power LayerLock LuxEdge Finish



PREMIUM HOME INTERIORS



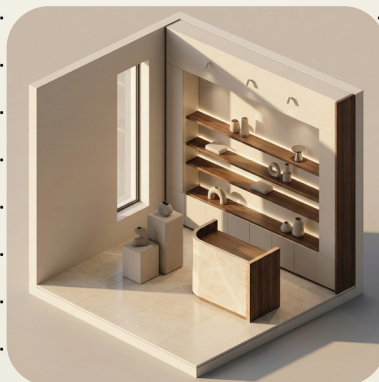
MODULAR KITCHENS



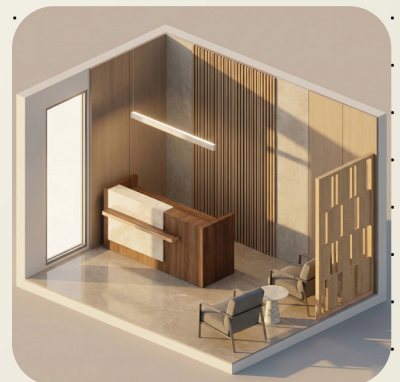
LUXURY WARDROBES



PREMIUM SERVICED APARTMENTS



HIGH-END RETAIL FIXTURES



PREMIUM COMMERCIAL RECEPTIONS

UPGRADE QUOTIENT

Upgrade from Indie to **Luxora** to achieve superior BWP performance, reducing finishing rework and moisture-related callbacks by up to 30%, while delivering a cleaner premium finish across **high-value interiors**.



IS 1659 BWP

PRABAL INDIE

BLOCKBOARD

Parameter	Industry Standard	INDIE
Length	0 to +6 mm tolerance	2443 mm max
Width	0 to +3 mm tolerance	1221 mm max
Thickness (19mm)	±5%	±2% (High Precision)
Squareness	≤ 2 mm/1000 mm	1 mm/1000 mm
Edge Straightness	≤ 2 mm/1000 mm	2 mm/1000 mm



THICKNESS

19mm | 25mm



SIZE

8'x4' | 8'x3' | 7'x4'
7'x3' | 6'x4' | 6'x3'



E1 CERTIFIED



AquaFend Tech™ – 72-hour BWP protection to resist moisture and reduce warping.

72-घंटे BWP सुरक्षा-नमी रोकने और टेढ़ापन/मुड़ाव कम करने के लिए।



TimberWork Pro™ – 100% kiln-seasoned Pine battens for a stable blockboard core.

100% किलन-सीज़न्ड पाइन बैटन्स-ब्लॉकबोर्ड कोर को स्थिर रखने के लिए।



XTerm Plus Tech™ – Smart defense against termite and borer attacks.

दीमक-बोरर को दे मात, स्मार्ट डिफेंस के साथ।



GermoShield Plus™ – Deep-cell impregnated battens for added hygienic protection.

डीप-सेल इम्प्रेग्नेटेड बैटन्स-अतिरिक्त स्वच्छता-सुरक्षा के लिए।



TrueGauge Duo™ – Both-side calibrated for consistent thickness and cleaner finishing.

दोनों तरफ कैलिब्रेटेड-एकसमान मोटाई और बेहतर फिनिशिंग के लिए।



Power LayerLock™ – Strong bonding that locks layers firmly for long-term hold.

मजबूत बंधन/चिपकाव-लेयर्स को मजबूती से लॉक कर लंबे समय तक पकड़ बनाए रखे।



PressEdge Pro™ – 4-times pressed for a tighter build and improved core integrity

4 बार प्रेस-सघन बनावट और बेहतर कोर के स्थिरता के लिए।



CoreTitan Density™ – Hardwood core veneer (Eucalyptus) for better strength and stability.

हार्डवुड कोर विनीयर (यूकेलिप्टस)-बेहतर मजबूती और स्थिरता के लिए।

100%

KILN-SEASONED
PINE
BATTENS

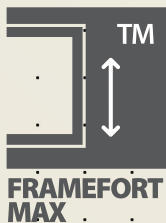
2

STAGE
QUALITY CHECK

30

YEARS
WARRANTY

SUPER
FEATURE



FrameFort Max™ – Every blockboard is built with reinforced wide frames that strengthen the board's most stress-prone zones, ensuring stronger edges, better screw-holding, cleaner joinery, improved load distribution across wide spans, and long-lasting stability in heavy-use carpentry applications.

हर ब्लॉकबोर्ड को रिइन्फोर्सड वाइड फ्रेम्स के साथ बनाया जाता है, जो बोर्ड के सबसे अधिक तनाव-वाले हिस्सों को मजबूत करते हैं-मजबूत किनारे, बेहतर स्कू-होल्डिंग, साफ जॉइनरी, चौड़े स्पैन में बेहतर भार-वितरण और भारी-उपयोग वाली बढ़ईगिरी में लंबे समय तक स्थिरता सुनिश्चित करते हैं।

PRABAL INDIE

BLOCKBOARD

Built for carpentry that demands straighter edges and stronger screw-holding, **Prabal Indie Blockboard** is our Economy Premium **IS 1659 BWP** solution for dependable interiors.

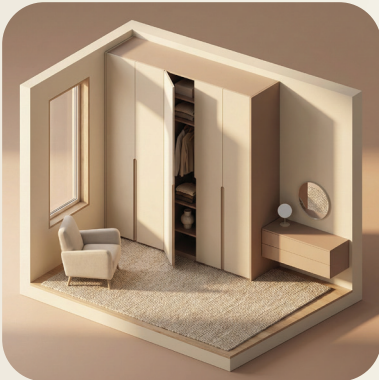
With a Eucalyptus hardwood veneer core, Gurjan face veneer, and a stable blockboard build powered by 100% kiln-seasoned Pine battens, it delivers cleaner workability, smoother finishing, and long-term dimensional control. Add reinforced wide frames, and you get stronger edges and better load handling where it matters most.

Prabal Indie Blockboard - when your build needs stability you can trust.

MID-LEVEL ECONOMY

**KNOW
YOUR
INDIE**

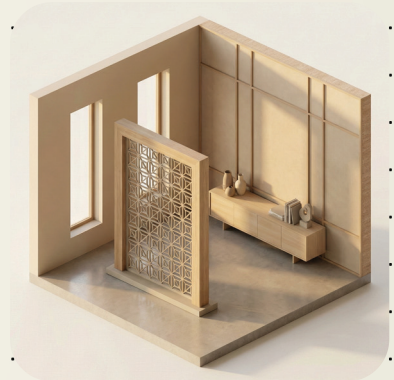
Range & SKU	Calibration	Emission	Key Features
PRABAL INDIE BLOCKBOARD	TrueGauge Duo	ECOBREATHE Level 1	TimberWork Pro AquaFend Tech Power LayerLock FrameFort Max



WARDROBES & TALL STORAGE



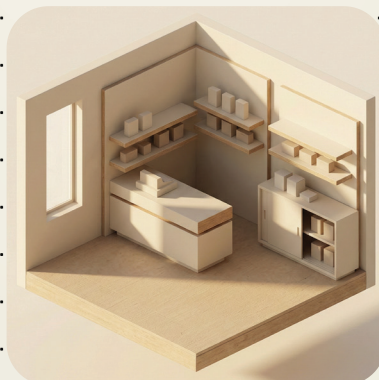
KITCHEN & CABINET SHUTTERS



PARTITION & PANELING FRAMEWORK



LARGE FURNITURE PANELS



RETAIL & DISPLAY CABINETS



INTERIOR FRAMES - JOINERY FOCUS

UPGRADE QUOTIENT

Upgrade from regular blockboard to **Indie Blockboard** to improve edge strength and screw-holding, reducing alignment issues and finishing defects by up to 20%, while lowering rework across carpentry-heavy projects.



IS 1659 BWP

PRABAL LUXORA

BLOCKBOARD

Parameter	Industry Standard	LUXORA
Length	0 to +6 mm tolerance	2443 mm max
Width	0 to +3 mm tolerance	1221 mm max
Thickness (19mm)	±5%	±2% (High Precision)
Squareness	≤ 2 mm/1000 mm	1 mm/1000 mm
Edge Straightness	≤ 2 mm/1000 mm	2 mm/1000 mm



THICKNESS

19mm | 25mm



SIZE

8'x4' | 8'x3' | 7'x4'
7'x3' | 6'x4' | 6'x3'



E0 COMPLIANT



AquaFend Tech™ – 100% Boiling Water Proof protection to resist swelling and moisture damage.

100% उबलते पानी से सुरक्षा, नमी में सूजन कम करे और बोर्ड को स्थिर रखे।



TrueGauge Duo™ – Both-side calibrated for consistent thickness and cleaner finishing.

दोनों तरफ कैलिब्रेटेड—एकसमान मोटाई और बेहतर फिनिशिंग के लिए।



TimberWork Pro™ – Hand-picked 100% kiln-seasoned Pine battens for a more stable core.

हैंड-पिकड 100% किल्न-सीज़न्ड पाइन बैटन्स—अधिक स्थिर कोर के लिए।



Power LayerLock™ – Strong bonding that locks layers firmly for long-term hold.

मजबूत बंधन/चिपकाव—लेयर्स को मजबूती से लाक कर लंबे समय तक पकड़ बनाए रखे।



XTerm Plus Tech™ – Smart defense against termite and borer attacks.

दीमक-बोरर को दे मात, स्मार्ट डिफेंस के साथ।



PressEdge Pro™ – 4-times pressed for a tighter build and improved core integrity

4 बार प्रेसड—सघन बनावट और बेहतर कोर के स्थिरता के लिए।



Germoshield Plus™ – Deep-cell impregnated battens for added hygienic protection.

डीप-सेल इम्प्रेग्नेटेड बैटन्स—अतिरिक्त स्वच्छता-सुरक्षा के लिए।



CoreTitan Density™ – Gurjan core veneer for higher compactness, better stability, and stronger load handling.

गुरजन कोर विनीयर, अधिक सघनता, बेहतर स्थिरता और मजबूत भार-सहारा के लिए।

100%

HAND PICKED
KILN-SEASONED
PINE BATTENS

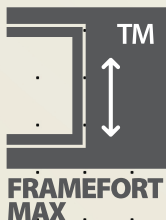
2

STAGE
QUALITY CHECK

LIFETIME

WARRANTY

SUPER
FEATURE



FrameFort Max™ – Every blockboard is built with reinforced wide frames that strengthen the board's most stress-prone zones, ensuring stronger edges, better screw-holding, cleaner joinery, improved load distribution across wide spans, and long-lasting stability in heavy-use carpentry applications.

हर ब्लॉकबोर्ड को रिइन्फोर्सड वाइड फ्रेम्स के साथ बनाया जाता है, जो बोर्ड के सबसे अधिक तनाव-वाले हिस्सों को मजबूत करते हैं—मजबूत किनारे, बेहतर स्कू-होल्डिंग, साफ जॉइनरी, चौड़े स्पैन में बेहतर भार-वितरण और भारी-उपयोग वाली बढ़ईगोरी में लंबे समय तक स्थिरता सुनिश्चित करते हैं।

PRABAL LUXORA

BLOCKBOARD

Prabal Luxora Blockboard is our premium IS 1659 BWP board, crafted for high-finish interiors where straight edges, clean joinery, and long-term stability are non-negotiable. With 100% Boiling Water Proof protection, a tighter pressed build, and a refined surface that holds premium laminations and paint beautifully, Luxora is built for projects that must look sharp and stay that way.

At its core, Luxora upgrades to a Gurjan core veneer and hand-picked 100% kiln-seasoned Pine battens (TimberWork Pro™), delivering stronger edge performance, smoother workability, and better control across wide panels.

Prabal Luxora - It's blockboard with premium discipline... inside and out.

PREMIUM

**KNOW
YOUR
LUX**

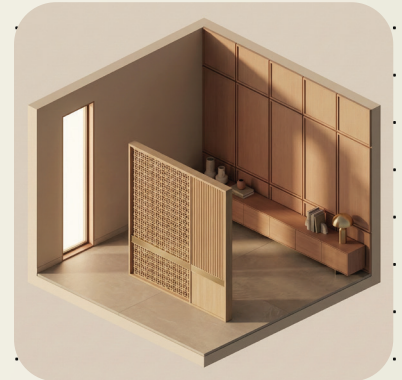
Range & SKU	Calibration	Emission	Key Features
PRABAL LUXORA BLOCKBOARD	TrueGauge Duo	ECOBREATHE Level 0	TimberWork Pro AquaFend Tech Power LayerLock FrameFort Max



WALK-IN WARDROBE



PREMIUM MODULAR KITCHEN



DESIGNER DIVIDER + PANELING



EXECUTIVE OFFICE STORAGE



BOUTIQUE RETAIL DISPLAY



PREMIUM BEDROOMS

UPGRADE QUOTIENT

Upgrade from Indie to **Luxora Blockboard** to move from everyday stability to premium-grade control, with cleaner edges, tighter joinery, better finish hold, and fewer callbacks on high-visibility interiors.

IS 5509

PRABAL FIERO

FIRE RETARDANT PLY

Parameter	Industry Standard	FIERO
Length	0 to +6 mm tolerance	2443 mm max
Width	0 to +3 mm tolerance	1221 mm max
Thickness (19mm)	±5%	±2% (High Precision)
Squareness	≤ 2 mm/1000 mm	1 mm/1000 mm
Edge Straightness	≤ 2 mm/1000 mm	2 mm/1000 mm



THICKNESS

4mm | 6mm | 9mm | 12mm
16mm | 19mm | 25mm



SIZE

8' x 4'



E0 COMPLIANT



AquaFend Tech™ – 100% Boiling Water Proof protection to resist swelling and moisture damage.

100% उबलते पानी से सुरक्षा—सूजन घटाए और नमी-क्षति से बचाए।



BlazeBlock™ – Fire retardant build (2X) for stronger fire-safety performance in critical interiors.

2X फायर-रिटार्डेंट बिल्ड—महत्वपूर्ण इंटीरियर्स में बेहतर अग्नि-सुरक्षा प्रदर्शन।



XTerm Plus Tech™ – Preservative surface treatment enhanced with fire-retardant additives for added fire safety and termite resistance.

अग्निरोधक एडिटिव्स से संवर्धित संरक्षक सतह उपचार, अतिरिक्त अग्नि सुरक्षा तथा दीमक प्रतिरोध प्रदान करता है।



GermoShield Plus™ – Fire-retardant pressure impregnation as per IS 5539 to enhance protection and long-term durability.

IS 5539 के अनुसार फायर-रिटार्डेंट प्रेशर इम्प्रेगनेशन—बेहतर सुरक्षा और लंबे समय तक टिकाऊपन के लिए।



TrueGauge Duo™ – Both-side calibrated for consistent thickness and cleaner finishing.

दोनों तरफ कैलिब्रेटेड—एकसमान मोटाई और बेहतर फिनिशिंग के लिए।



Seamless Core™ – Seamless full-length core and full-length panel construction for aligned layers and a stronger build.

सीमलेस फुल-लेंथ कोर और फुल-लेंथ पैनल—बेहतर अलाइनमेंट और मजबूत बनावट के लिए।



PressEdge Pro™ – 4-times pressed for a tighter build and improved core integrity

4 बार प्रेस—सघन बनावट और बेहतर कोर के स्थिरता के लिए।



CoreTitan Density™ – Gurjan-rich core for higher compactness and stronger strength.

गुरजन-रिच कोर—अधिक सघनता और बेहतर मजबूती के लिए।

2X

FIRE
RETARDANT
BUILD

4

STAGE
FIRE RETARDANT
IMPREGNATION

LIFETIME

WARRANTY

SUPER
FEATURE



Power LayerLock™ – Every sheet is bonded using an advanced flame-retardant formulation resin that strengthens layer-to-layer adhesion while supporting safer performance under heat, ensuring tighter bonding, improved structural integrity, and long-lasting reliability in fire-sensitive interior applications.

हर शीट को उन्नत फ्लेम-रिटार्डेंट फॉर्म्यूलेशन रेजिन से बॉन्ड किया जाता है, जो लेयर-टू-लेयर पकड़ को मजबूत करते हुए गर्मी में अधिक सुरक्षित प्रदर्शन में मदद करता है—टाइट बॉन्डिंग, बेहतर संरचनात्मक मजबूती और फायर-सेंसिटिव इंटीरियर्स में लंबे समय तक भरोसेमंद टिकाऊपन सुनिश्चित करता है।

PRABAL FIERO

FIRE RETARDANT PLY

Prabal Fiero is our **IS 5509** Prabal fire-retardant plywood, built for spaces where safety can't be an afterthought. Engineered for low flammability and minimum surface flame propagation, Fiero is designed to ignite less and stay safer - with a low ignition tendency, low smoke output, and a minimum 45-minute fire shield to help buy critical response time when it matters most.

A stronger fire system end-to-end 2X fire-retardant build, an advanced flame-retardant formulation resin for secure bonding, and fire-retardant pressure impregnation as per **IS 5539** for deeper protection. Add 100% Boiling Water Proof endurance, and Fiero becomes the right choice for both high-occupancy commercial interiors and safety-conscious homes.

Prabal Fiero - safety-led plywood, made with Prabal discipline.

MID-LEVEL PREMIUM

**KNOW
YOUR
FIERO**

Range & SKU	Calibration	Emission	Key Features
PRABAL FIERO	TrueGauge Duo	ECOBREATHE Level 0	BlazeBlock Tech AquaFend Tech Power LayerLock GermaShield Plus



RESIDENTIAL KITCHEN



RESIDENTIAL UTILITY



LOBBY PANELING



OFFICE RECEPTION



RETAIL SHOWROOM FIT-OUT



CLINIC / SCHOOL WAITING AREA

UPGRADE QUOTIENT

Upgrade from Prabal Indie to **Prabal Fiero** to add a **2X fire-retardant** build, ideal for safety-conscious interiors where performance and peace of mind are part of the spec.

IS 10701

PRABAL STRUCTURA

STRUCTURAL PLY

Parameter	Industry Standard	STRUCTURA
Length	0 to +6 mm tolerance	2443 mm max
Width	0 to +3 mm tolerance	1221 mm max
Thickness (19mm)	±5%	±2% (High Precision)
Squareness	≤ 2 mm/1000 mm	1 mm/1000 mm
Edge Straightness	≤ 2 mm/1000 mm	2 mm/1000 mm



THICKNESS

4mm | 6mm | 9mm | 12mm
16mm | 19mm | 25mm



SIZE

8' x 4'



E0 COMPLIANT



AquaFend Tech™ – 100% Boiling Water Proof protection to resist swelling and moisture damage.

100% उबलते पानी से सुरक्षा, सूजन और नमी-क्षति से बचाव।



TrueGauge Duo™ – Both-side calibrated for consistent thickness and cleaner finishing.

दोनों तरफ कैलिब्रेटेड-एकसमान मोटाई और बेहतर फिनिशिंग के लिए।



BlazeBlock™ – Fire-resistant build that supports safer performance in heat-prone applications.

फायर-रेजिस्टेंट बिल्ड-गर्मी वाले उपयोग में अधिक सुरक्षित प्रदर्शन के लिए।



Power LayerLock™ – High-strength PF resin formulation for load-bearing bonding and durability.

हाई-स्ट्रेंथ PF रेजिन-लोड-बेयरिंग बॉन्डिंग और टिकाऊपन के लिए।



XTerm Plus Tech™ – Smart defense against termite and borer attacks.

दीमक-बोरर को दे मात, स्मार्ट डिफेंस के साथ।



PressEdge Pro™ – 4-times pressed for a tighter build and improved core integrity

4 बार प्रेसड-सघन बनावट और बेहतर कोर के स्थिरता के लिए।



LuxEdge Finish™ – Polished to perfection, smooth to the last detail.

अंतिम छोर तक स्मूद, फिनिशिंग में कोई समझौता नहीं।



CoreTitan Density™ – HD Gurjan-rich core for higher density and superior screw-holding strength.

HD गुरजन-रिच कोर-अधिक घनत्व और बेहतर स्कू-होल्डिंग के लिए।

SUPER FEATURE



Seamless Core™ – Every sheet is built using full-length core layers that are precisely composed and tightly stitched, ensuring perfectly aligned cores, zero gaps, no overlaps, and uncompromised structural strength.

प्रत्येक शीट में पूरी लंबाई वाले कोर लेयर्स का उपयोग किया जाता है जिन्हें सटीक रूप से जोड़ा और स्टिच किया जाता है। इससे कोर पूरी तरह से अलाइन रहता है, कोई गैप नहीं, कोई ओवरलैप नहीं और मजबूती में कोई कमी नहीं।

HD

GURJAN
RICH
CORE

2

STAGE
QUALITY CHECK

LIFETIME

WARRANTY

PRABAL STRUCTURA

STRUCTURAL PLY

Prabal Structura is our **IS 10701** structural grade plywood. It is built for projects where plywood must do more than finish a surface, it must hold its form, carry load, and stay true over time. Designed with a balanced build for anti-bend dimensional stability, Structura delivers warp-resistant performance that supports demanding spans and high-stress applications.

At its core is a high-density HD Gurjan-rich construction paired with a premium Gurjan face veneer, giving you stronger screw-holding and a cleaner working surface. Add pressure-treated durability and a high-strength PF resin system engineered for load-bearing performance, and you get a board that remains dependable long after installation.

Prabal Structura — strength that stays aligned.

MID-LEVEL PREMIUM

**KNOW
YOUR
STRUCTURA**

Range & SKU	Calibration	Emission	Key Features
PRABAL STRUCTURA	TrueGauge Duo	ECOBREATHE Level 0	BlazeBlock Tech Seamless Core Power LayerLock CoreTitan Density



MEZZANINE LOFT



LOFT STORAGE



WAREHOUSE RACKS



SITE OFFICE CABIN



STAGE / EVENT PLATFORM DECKING



TRUCK CARGO BOX INTERIOR LINING

UPGRADE QUOTIENT

Upgrade from other structural Ply to **Prabal Structura** when the brief moves to structural stability with pressure-treated durability that help reduce bending/sagging risks and improve screw-holding in high-stress applications.



IS 4990

PRABAL SCALAR

SHUTTERING PLY

Parameter	Industry Standard	SCALAR
Length	0 to +6 mm tolerance	2443 mm max
Width	0 to +3 mm tolerance	1221 mm max
Thickness (18mm)	±5%	±2% (High Precision)
Squareness	≤ 2 mm/1000 mm	1 mm/1000 mm
Edge Straightness	≤ 2 mm/1000 mm	2 mm/1000 mm



THICKNESS

12mm | 18mm



WEIGHT

30Kg | 34Kg



SIZE

8' x 4'



Edge Seal Pro™ – Superior edge sealing helps reduce water absorption from the sides, improving panel life and stability on-site.

बेहतर एज-सीलिंग किनारों से पानी सोखने को कम करती है, जिससे साइट पर पैनल की लाइफ और स्थिरता बढ़ती है।



XTerm Plus Tech™ – All core material undergoes Deep Cell Chemical Impregnation (VPT) for long-lasting protection against termites, fungi, and wood-destroying micro-organisms.

पूरे कोर मटेरियल में डीप सेल केमिकल इम्प्रेगनेशन (VPT) किया जाता है, जो दीमक, फंगस और लकड़ी-नाशक सूक्ष्मजीवों से दीर्घकालिक सुरक्षा देता है।



Reframe Builder Pro™ – ReFrame BuilderPro is engineered for high-performance shuttering with 15+ reuse cycles, built to hold form, resist on-site wear, and deliver a more consistent concrete finish across repeated pours, project after project.

हार्ड-परफॉर्मेंस शटरिंग के लिए इंजीनियर किया गया, 15+ री-यूज साइकिल के साथ। यह फॉर्म को स्थिर रखता है, साइट पर होने वाले घिसाव का बेहतर सामना करता है, और बार-बार कास्टिंग में अधिक समान कंक्रीट फिनिश देता है—प्रोजेक्ट दर प्रोजेक्ट।

15+

RE-USE
CYCLE

2

STAGE
QUALITY CHECK

100%

BWP PF
RESIN BOND

PRABAL SCALAR

SHUTTERING PLY

Built for the pressure of real sites, where time, load, and repeat cycles decide the outcome. **Prabal Scalar** is our Economy Shuttering Plywood (**IS 4990**), made to deliver consistent performance through **15+** reuse cycles.

With a tough film-faced surface, strong bonding, and a stable build, Scalar helps formwork stay tight, edges hold, and pours come out cleaner. So you spend less time fixing, replacing, and re-aligning on site.

Prabal Scalar — built to repeat. Built to deliver.

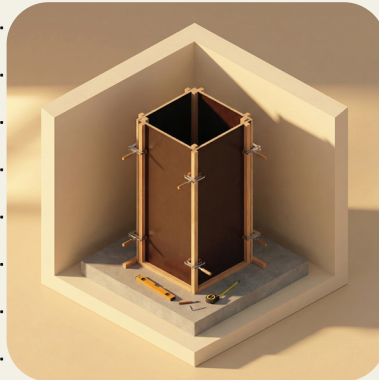
ECONOMY.

**KNOW
YOUR
SCALAR**

Range & SKU	Calibration	Emission	Key Features
PRABAL SCALAR	TrueGauge Duo	NA	Edge Seal Pro XTerm Plus Tech Reframe Builder Pro



SLAB + BEAM FORMWORK BAY



COLUMN SHUTTERING



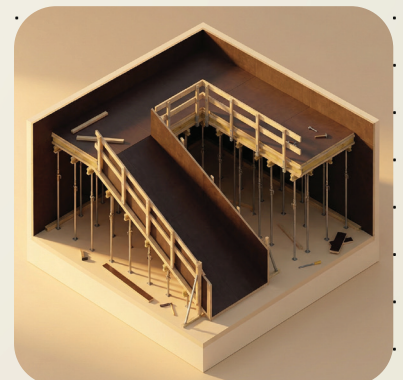
STAIRCASE SHUTTERING



SHEAR WALL / LIFT CORE WALL



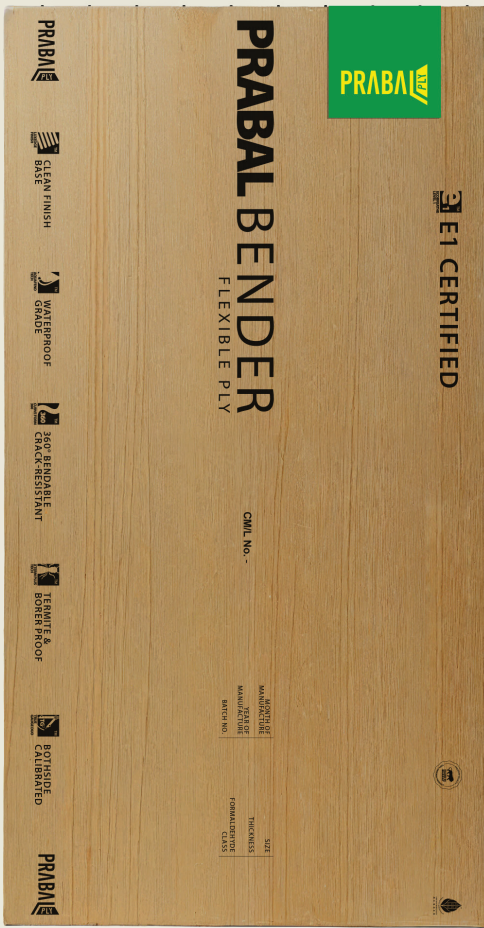
FOOTING + PEDESTAL FORMWORK



RAMP / INCLINED SLAB FORMWORK

UPGRADE QUOTIENT

Upgrade from regular shuttering ply to **Prabal Scalar** to get **15+** repeat-use cycles, tighter formwork, and cleaner concrete finishes, reducing frequent panel replacement and site rework across slabs, columns, and walls.



PRABAL BENDER

FLEXIBLE PLY

Parameter	Industry Standard	BENDER
Length	0 to +6 mm tolerance	2443 mm max
Width	0 to +3 mm tolerance	1221 mm max
Thickness (18mm)	±5%	±2% (High Precision)
Squareness	≤ 2 mm/1000 mm	1 mm/1000 mm
Edge Straightness	≤ 2 mm/1000 mm	2 mm/1000 mm



THICKNESS

6mm | 10mm | 12mm | 18mm



SIZE

8' x 4'



E1 CERTIFIED

Note for production: Flexible plywood commonly comes in long-grain vs cross-grain bending orientations choose based on the direction of the curve.



AquaFend Tech™ – Waterproof grade endurance for moisture-prone curved detailing (as applicable)

वॉटरप्रूफ-ग्रेड एंड्योरेंस, नमी-प्रवण कर्व डिटेल्सिंग के लिए (जहाँ लागू)।



TrueGauge Duo™ – Both-side calibrated for uniform thickness and cleaner finishing on curves.

दोनों तरफ कैलिब्रेटेड, समान मोटाई और कर्व्स पर साफ फिनिशिंग।



XTerm Plus Tech™ – Protection against borers to support longer life in interior applications.

बोरर से सुरक्षा-इंटीरियर उपयोग में लंबी लाइफ के लिए।



PressEdge Pro™ – Dual-pressed process to support flatness, smoothness, and consistent sheet behavior. anti-bend stability.

डुअल-प्रेसड प्रोसेस, फ्लैटनेस, स्मूदनेस और कंसिस्टेंसी के लिए।



LuxEdge Finish™ – Smooth surface suitable for laminates, veneers, and paint - clean finish base

स्मूद सतह, लैमिनेट, विनीयर और पेंट के लिए उपयुक्त, साफ फिनिश बेस।



CoreTitan Density™ – Built with highly durable tropical hardwood veneers for resilience during shaping.

उच्च टिकाऊ ट्रॉपिकल हार्डवुड विनीयर बिल्ड, शेपिंग के दौरान बेहतर रेजिलिएंस।

360°

BENDABLE
CRACK RESIST
PLY

2

STAGE
QUALITY CHECK

SMOOTH

SURFACE
FINISH

**SUPER
FEATURE**



Curve Form 360™ – engineered for seamless curved work, allowing Bender to wrap, bend, and shape smoothly with a crack-resistant build. It holds a cleaner arc with fewer joints and less patchwork, while keeping the surface stable for laminates, veneers, and paint, so curved designs look premium, not pieced together.

सीमलेस कर्व्ड वर्क के लिए इंजीनियर किया गया है-जिससे Bender स्मूद तरीके से रैप, बेंड और शेप हो सके, क्रैक-रेजिस्टेंट बनावट के साथ। यह कम जाइंट्स और कम पैचवर्क में साफ आर्क बनाए रखता है, और लैमिनेट/विनीयर/पेंट के लिए सतह को स्थिर रखता है-ताकि कर्व्ड डिज़ाइन प्रीमियम दिखे, जोड़-तोड़ जैसा नहीं।

**PG19
BUILD
CONNECT
BELONG**

PRABAL BENDER

FLEXIBLE PLY

Prabal Bender is built for designs that refuse straight lines. Made for smooth curves, clean wraps, and seamless contours, Bender delivers extreme flexibility with consistent surface quality, so curved work looks intentional, not improvised.

Designed using precision construction that supports crack resistance even on tight bends, it's ideal for interior applications where form matters as much as finish.

Available in multiple thickness options to match different bending radii, Bender helps carpenters and designers create curves that stay clean through laminates, veneers, and paint.

Prabal Bender — curves, without compromises.

MID-LEVEL PREMIUM

**KNOW
YOUR
BENDER**

Range & SKU	Calibration	Emission	Key Features
PRABAL BENDER	TrueGauge Duo	ECOBREATHE Level 1	Curve Form 360 XTerm Plus Tech LuxEdge Finish



MODERN CURVED FURNITURE



CURVED RECEPTION COUNTER



CIRCULAR COLUMN CLADDING



CURVED FEATURE WALL PANEL



CURVED WARDROBE RETURN



DESIGNER CEILING COVE

UPGRADE QUOTIENT

Upgrade from regular ply + cut-and-join curve methods to **Prabal Bender** to achieve seamless curves with fewer joints, faster execution, and a smoother finish base, reducing patchwork, uneven arcs, and visible segmentation on premium curved interiors.



IS 2202 - PART 1

PRABAL HD+
FLUSHDOORS

Parameter	Industry Standard	HD+
Length	±5 mm tolerance	±4 length
Width	±5 mm tolerance	±4 width
Thickness (30mm)	±5%	±2% (High Precision)
Squareness	≤ 2 mm/1000 mm	1 mm/1000 mm
Edge Straightness	≤ 2 mm/1000 mm	2 mm/1000 mm



THICKNESS

30mm | 35mm



SIZE

STANDARD
FLUSHDOOR SIZES



E1 CERTIFIED

Note for production: Lock can be installed by the user on either side.



AquaFend Tech™ – 72-hour BWP protection to resist moisture and reduce warping.

72-घंटे BWP सुरक्षा-नमी रोकने और टेढ़ापन/मुड़ाव कम करने के लिए।



TrueGauge Duo™ – Both-side calibrated for consistent thickness and cleaner finishing.

दोनों तरफ कैलिब्रेटेड-एकसमान मोटाई और बेहतर फिनिशिंग के लिए।



TimberWork Pro™ – Hand-picked 100% kiln-seasoned Pine battens for a more stable core.

हैंड-पिक्ड 100% किलन-सीज़न्ड पाइन बैटन्स-अधिक स्थिर कोर के लिए।



PowerLayerLock™ – Strong bonding that locks layers firmly for long-term hold.

मजबूत बंधन/चिपकाव-लेयर्स को मजबूती से लाक कर लंबे समय तक पकड़ बनाए रखे।



XTerm Plus Tech™ – Smart defense against termite and borer attacks.

दीमक-बोरर को दे मात, स्मार्ट डिफेंस के साथ।



PressEdge Pro™ – 2-times pressed for an improved core integrity

2 बार प्रेस्ड-सघन बनावट और बेहतर कोर के स्थिरता के लिए।



Germoshield Plus™ – Deep-cell impregnated battens for added hygienic protection.

डीप-सेल इम्प्रेग्नेटेड बैटन्स-अतिरिक्त स्वच्छता-सुरक्षा के लिए।



CoreTitan Density™ – Gurjan core veneer for higher compactness, better stability, and stronger load handling.

गुरजन कोर विनीयर, अधिक सघनता, बेहतर स्थिरता और मजबूत भार-सहारा के लिए।

100%

HAND PICKED
KILN-SEASONED
PINE BATTENS

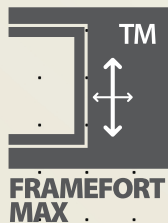
2

STAGE
QUALITY CHECK

21 YEARS

WARRANTY

SUPER
FEATURE



FrameFort Max™ – Built with a kiln-seasoned solid Pine perimeter (stiles & rails), HD+ flush doors gain a stronger, tighter frame that holds shape under daily use. This reinforced border boosts hinge and hardware stability, improves screw grip, and helps the shutter stay straight, steady, and dependable over time.

किलन-सीज़न्ड ठोस पाइन (चीड़) परिमीटर (स्टाइल्स और रैल्स) से बना यह फ्रेम HD+ फ्लश डोर्स को अधिक मजबूत और सटीक फिट देता है, जो रोज़मर्रा के उपयोग में भी आकार बनाए रखता है। यह हिग अलाइनमेंट बेहतर करता है, हार्डवेयर के लिए स्कू-ग्रिप बढ़ाता है, और दरवाज़े को लंबे समय तक सीधा, स्थिर और भरोसेमंद रखता है।

PRABAL HD+ FLUSH DOORS

Prabal HD+ Flush Doors are engineered as IS 2202 (Part 1) flush door shutters—built for entrances and interiors where a door must feel solid, shut clean, and stay aligned through years of use. HD+ focuses on core strength, surface stability, and dependable hardware fitment, so hinges sit tighter, locks hold better, and the door retains its straightness even under daily load and changing conditions.

From main doors to interior shutters, HD+ is designed to maintain feel, finish, and fit—so what you install today continues to perform like it should.

Prabal HD+ - built to close with confidence.

MID-LEVEL PREMIUM

**KNOW
YOUR
HD**

Range & SKU	Calibration	Emission	Key Features
PRABAL HD+	TrueGauge Duo	ECOBREATHE Level 1	TimberWork Pro AquaFend Tech Power LayerLock FrameFort Max



MAIN ENTRANCE DOOR



BEDROOM DOOR



BATHROOM DOOR



HOTEL LOBBY VESTIBULE



OFFICE CABIN DOOR



HOME / PRIVATE LIBRARY DOOR

UPGRADE QUOTIENT

Upgrade from a basic flush door to Prabal HD+ to get a tighter, more stable build, with dual-press construction, both-side calibration, and a zero-gap core that helps doors stay straighter, hold hardware better, and feel more dependable over long daily use.

IDEAL USE

JiVi PLY

BUILT TO LAST

FEATURE	PRODUCTS				
	IS 303 MR	IS 303 BWR	IS 303 BWP	IS 1659 MR	IS 2202-I MR
MOIST RESIST	✓	✓	✓	✓	✓
	MR GRADE	BWR GRADE	BWP GRADE	HUMIDITY RESISTANT	HUMIDITY RESISTANT
UNI THICK	✓	✓	✓	✓	✓
	CALIBRATED	CALIBRATED	CALIBRATED	CALIBRATED	CALIBRATED
UNI PRESS	✓	✓	✓	✓	✓
	DUAL-PRESS	DUAL-PRESS	4-TIMES PRESSED	DUAL-PRESS	DUAL-PRESS
UNI BOND	✓	✓	✓	✓	✓
	MUF ADHESIVE	MUF ADHESIVE	PF (II) ADHESIVE	MUF ADHESIVE	MUF ADHESIVE
ATB GUARD	✓	✓	✓	✓	✓
	TREATED	TREATED	TREATED	TREATED	TREATED
MICRO GUARD	X	X	X	✓	✓
	–	–	–	CHEMICAL TREATMENT	CHEMICAL TREATMENT
E1 EMISSION	✓	✓	✓	✓	✓
	E1 CERTIFIED	E1 CERTIFIED	E1 CERTIFIED	E1 CERTIFIED	E1 CERTIFIED
UNI CORE	✓	✓	✓	✓	✓
	HARDWOOD CORE	HARDWOOD CORE	HARDWOOD CORE	HARDWOOD CORE	HARDWOOD CORE
FACE VENEER	✓	✓	✓	✓	✓
	OKOUME	OKOUME	OKOUME	OKOUME	OKOUME
UNI LENGTH	X	✓	✓	✓	✓
	–	FULL-LENGTH CORE	FULL-LENGTH CORE	GAP-FREE CORE	GAP-FREE CORE
UNI LIFE	✓	✓	✓	✓	✓
	DURABLE SPECIES	DURABLE SPECIES	DURABLE SPECIES	DURABLE SPECIES	DURABLE SPECIES
SMOOTH FINISH	✓	✓	✓	✓	✓
	SMOOTH FINISH	SMOOTH FINISH	SMOOTH FINISH	SMOOTH FINISH	SMOOTH FINISH
TIMBER SELECT	X	X	X	✓	✓
	–	–	–	KILN-SEASONED PINE	KILN-SEASONED PINE
UNI FRAME	X	X	X	✓	✓
	–	–	–	REINFORCED FRAMES	SOLID PERIMETER

FROM WHERE WE BUILD STRENGTH

Prabal Ply is manufactured at Baneswarpur, P.O. Hasimnagar, P.S. Falta, South 24 Parganas, West Bengal, strategically positioned within one of the state's most established industrial corridors.

Falta is a recognised industrial hub, anchored by its Special Economic Zone and organised industrial park. The region offers reliable infrastructure, streamlined industrial support systems, and proximity to key timber sourcing channels, ports, and logistics networks, ensuring steady raw material flow and operational efficiency.

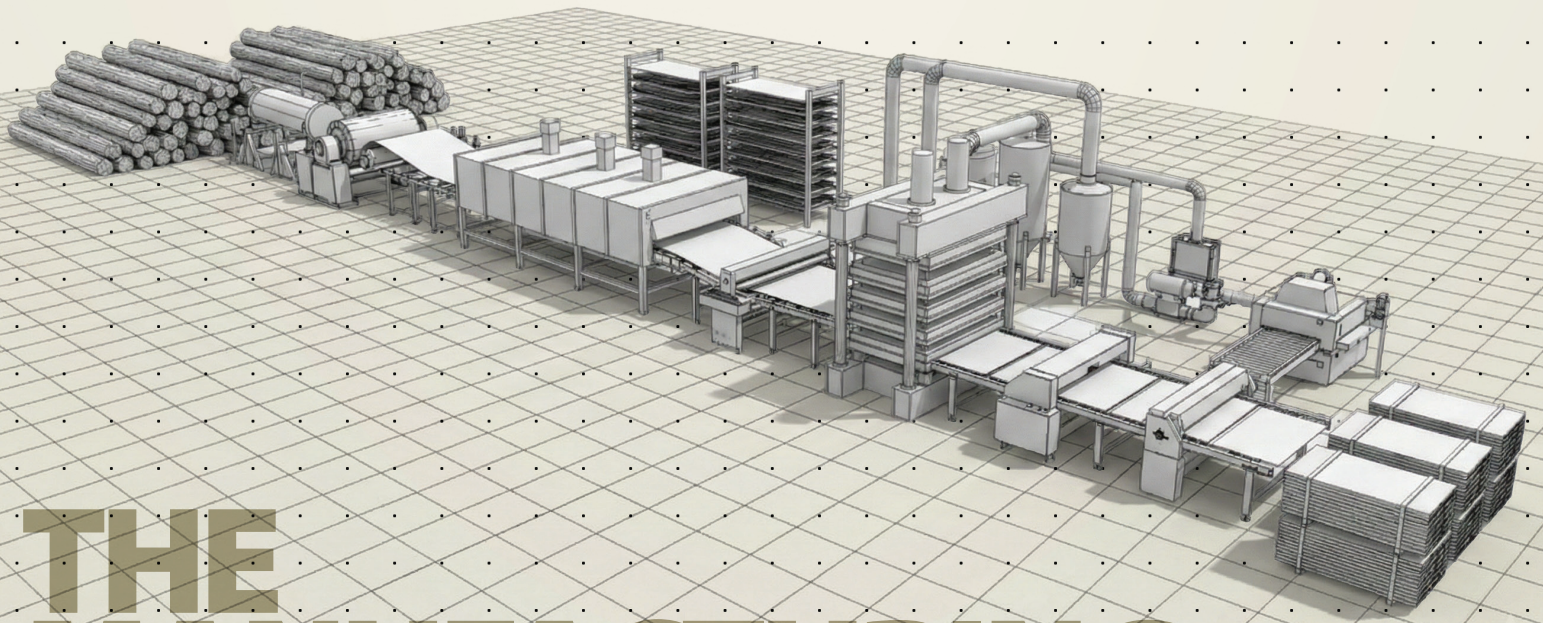
Strong road connectivity to Kolkata and major markets across West Bengal, Odisha, Jharkhand, Bihar, and the North-Eastern states enables faster dispatches, optimised logistics, and dependable delivery timelines. Access to skilled manpower and essential industrial utilities further reinforces production consistency and quality control.

This strategic location empowers Prabal Ply to support its dealer partners efficiently, delivering plywood that stands for durability, performance, and trust, batch after batch.

6.3 ACRES **MANUFACTURING FACILITY**

EXPANDABLE UPTO 16.1 ACRES

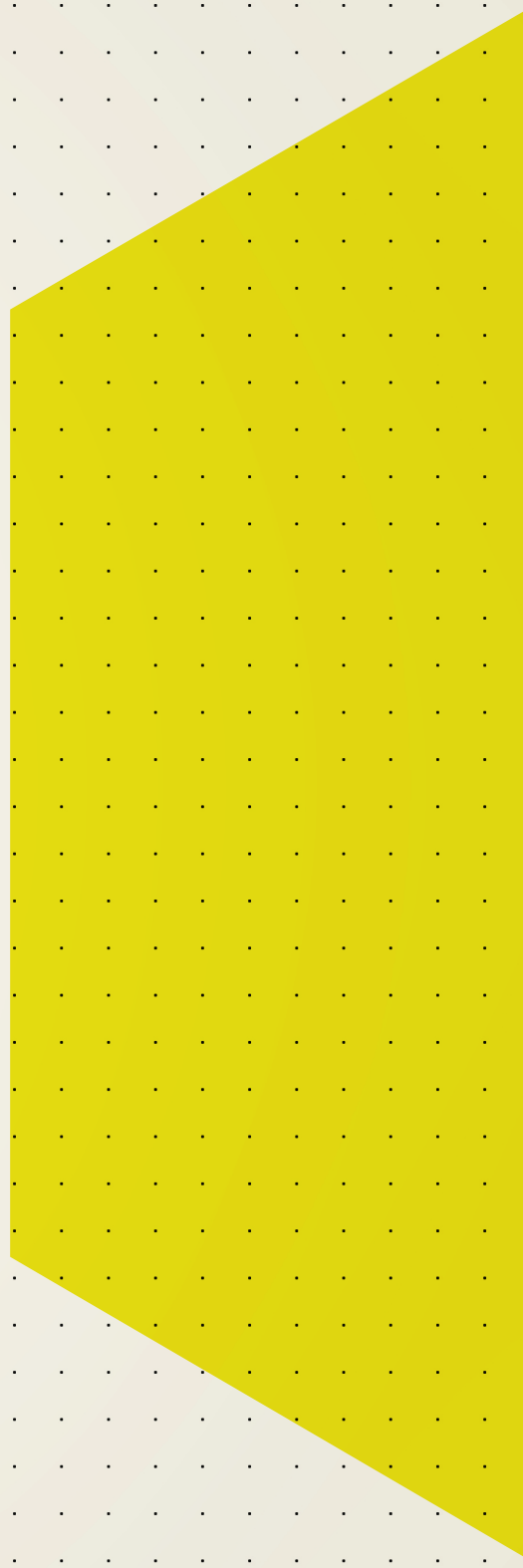
120 T.P.D **PRODUCTION CAPACITY**



THE MANUFACTURING UNIT

Q&A

WITH YOUR
PRABAL REPRESENTATIVE



Q&A

WITH YOUR
PRABAL REPRESENTATIVE

PRABAL REP. _____

CONTACT NO. _____

BUILD.

WITH PASSION

CONNECT.

YOUR DREAMS TO REALITY

BELONG.

TO A COMMUNITY OF CRAFTSMEN
WHO VALUE QUALITY

CALL FOR SUPPORT

1800 309 5528



BANESWARPUR, P.O. HASIMNAGAR, P.S. FALTA, SOUTH 24 PGNS
WEST BENGAL- 743513